

## AIRA 2005

**AIRA 2005 is an advanced Network Video Recorder (NVR) with integrated video analytics that can detect and prevent threatening events in real-time. AIRA 2005 simultaneously enables digital video recording from network, mega-pixel and analog devices, intelligent video analysis and remote access to live and recorded images from any networked computer. AIRA can automatically track and classify objects such as cars and people and push content to security personnel as required.**

### Highlights

- Real-time analysis of your connected cameras to detect abnormal activity and security threats
- Pure software solution including both video analytics and video management as one product
- Automated PTZ camera control for zooming in on interesting events without the need for human intervention
- Blackberry® handheld support keeps you up to date while in the field

### Technical Information

AIRA is completely scalable, with a many-to-many client-server model allowing multiple physical systems to be used in an array of AIRA Servers, creating a unified experience for the user. AIRA can store video to local hard disk, a RAID configuration or even a storage-area-network (SAN). A combination of analog, network, and PTZ cameras can all be connected to one server, making it the most flexible system on the market.

### Key Features

Filters large amounts of video and focuses human attention appropriately

Maximum scalability

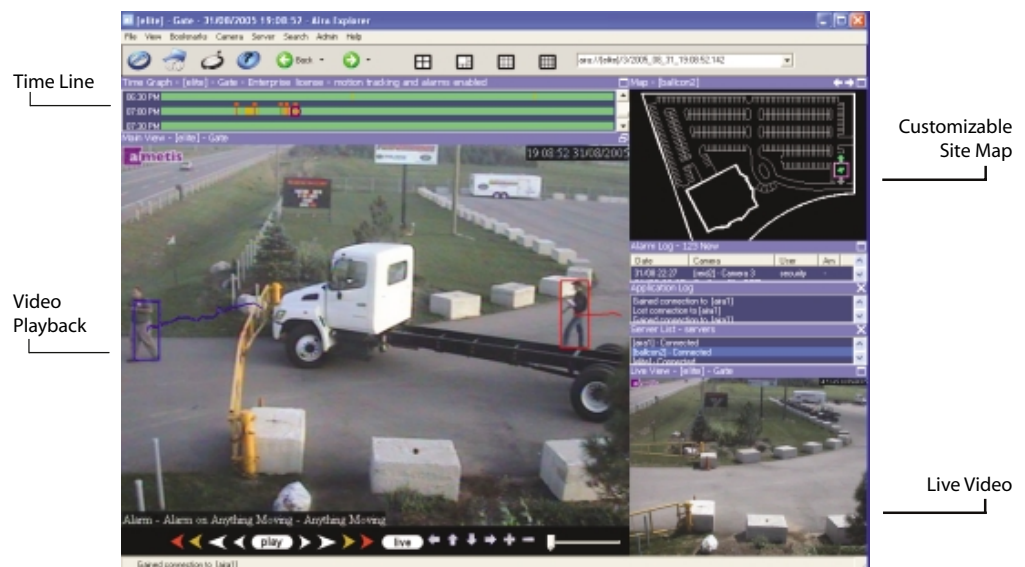
Easiest migration path from analog to intelligent, digital network

Installable on commercial-off-the-shelf hardware

Easily expanded into building management systems via SDK

Downloadable in three different editions

60 day download trial



Main Console through AIRA Explorer (AE)



(Left) Same view from a fixed camera and a PTZ camera automatically controlled by AIRA. Auto-PTZ control enables users to see more information without human intervention.



(Top right) Multi-view dynamically updates viewable cameras depending on activity (can be customized to display up to 16 cameras).



(Bottom right) Advanced Search allows users to define area of interest and to search for vehicles and people.

### AIRA features per edition

|   | Standard Edition | Professional Edition | Enterprise Edition |
|---|------------------|----------------------|--------------------|
| <b>Advanced Video Management:</b>       |                  |                      |                    |
| Integrated Site Map                     | ●                | ●                    | ●                  |
| Supports analog cameras                 | ●                | ●                    | ●                  |
| Supports network cameras (MPEG-4/MJPEG) | ●                | ●                    | ●                  |
| Supports megapixel cameras              | ●                | ●                    | ●                  |
| Supports 360-degree cameras             | ●                | ●                    | ●                  |
| Time Line                               | ○                | ●                    | ●                  |
| Remote live view                        | ●                | ●                    | ●                  |
| Multi-site capability                   | ●                | ●                    | ●                  |
| Encryption & watermarking               | ●                | ●                    | ●                  |
| Event based Recording                   | ○                | ○                    | ●                  |
| <b>Real-time Video Analysis:</b>        |                  |                      |                    |
| Motion Tracking                         | ○                | ●                    | ●                  |
| Object Classification                   | ○                | ○                    | ●                  |
| Object Counting (people/vehicles)       | ○                | ○                    | ●                  |
| Object Persistence                      | ○                | ○                    | ●                  |
| <b>Alarm Policy Settings:</b>           |                  |                      |                    |
| Alarm on object type                    | ○                | ○                    | ●                  |
| Alarm on object direction               | ○                | ○                    | ●                  |
| Alarm on camera manipulation            | ○                | ○                    | ●                  |
| <b>Automatic Alarm Response:</b>        |                  |                      |                    |
| Automatic PTZ control                   | ○                | ○                    | ●                  |
| Siren                                   | ○                | ○                    | ●                  |
| Alarm I/O (relay)                       | ○                | ○                    | ●                  |
| Text to Speech                          | ○                | ○                    | ●                  |
| Email                                   | ○                | ○                    | ●                  |
| FTP                                     | ○                | ○                    | ●                  |
| Blackberry                              | ○                | ○                    | ●                  |
| <b>Other:</b>                           |                  |                      |                    |
| NAS or SAN support                      | ●                | ●                    | ●                  |
| Multilanguage                           | ●                | ●                    | ●                  |
| SDK                                     | ●                | ●                    | ●                  |
| Event based search                      | ○                | ○                    | ●                  |

● feature included    ○ feature partially supported    ○ feature not included

### System Requirements

**Client Software (Aira Explorer)**  
 Windows 2000 or higher  
 1.8Ghz processor  
 256 MB Ram  
 50MB of available hard disk space

**Server Software (AIRA Server)**  
 Windows XP SP2/Windows 2003  
 2.4Ghz processor  
 256 MB Ram  
 4GB of available hard disk space\*

\*Hard disk usage will vary depending on configuration and number of cameras

### Supported network devices:

